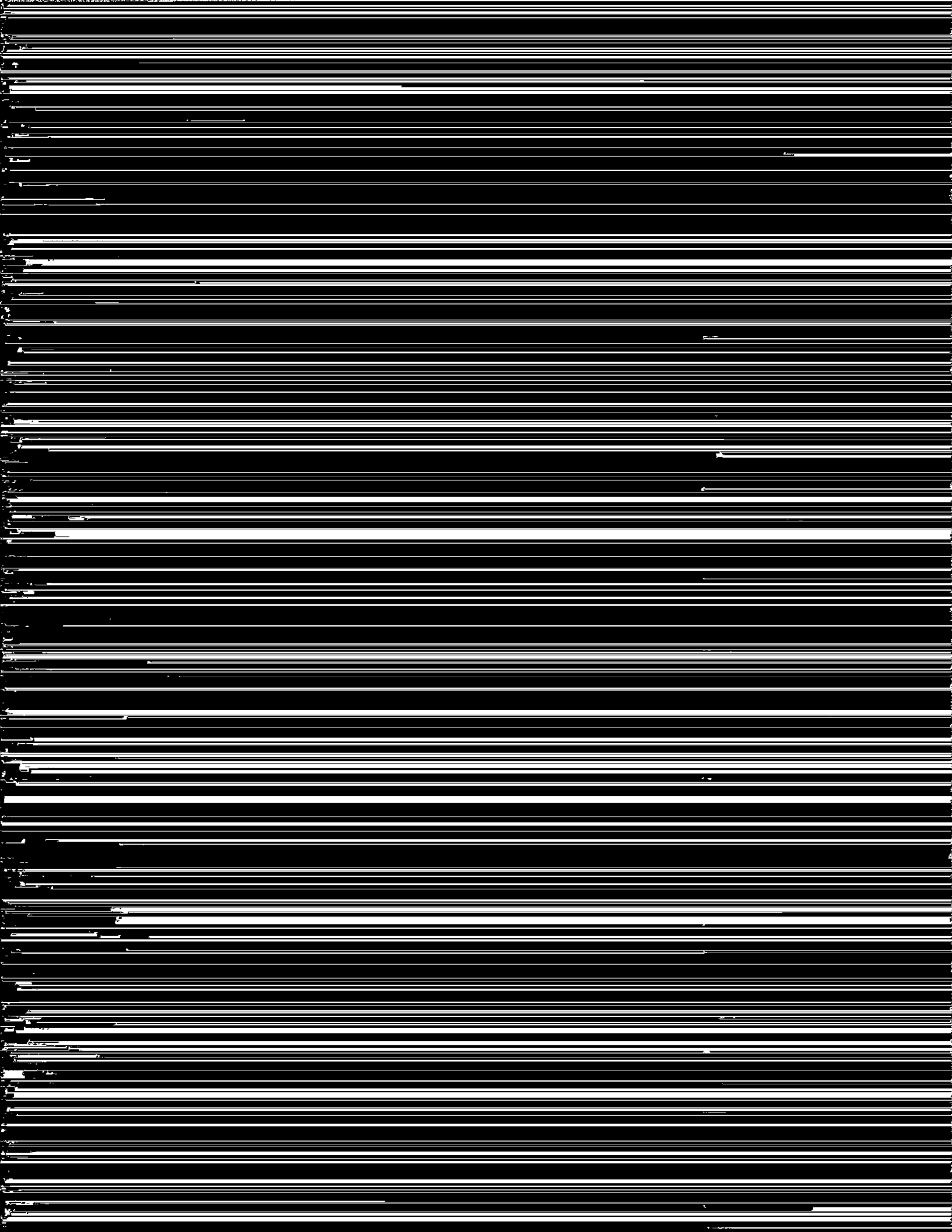
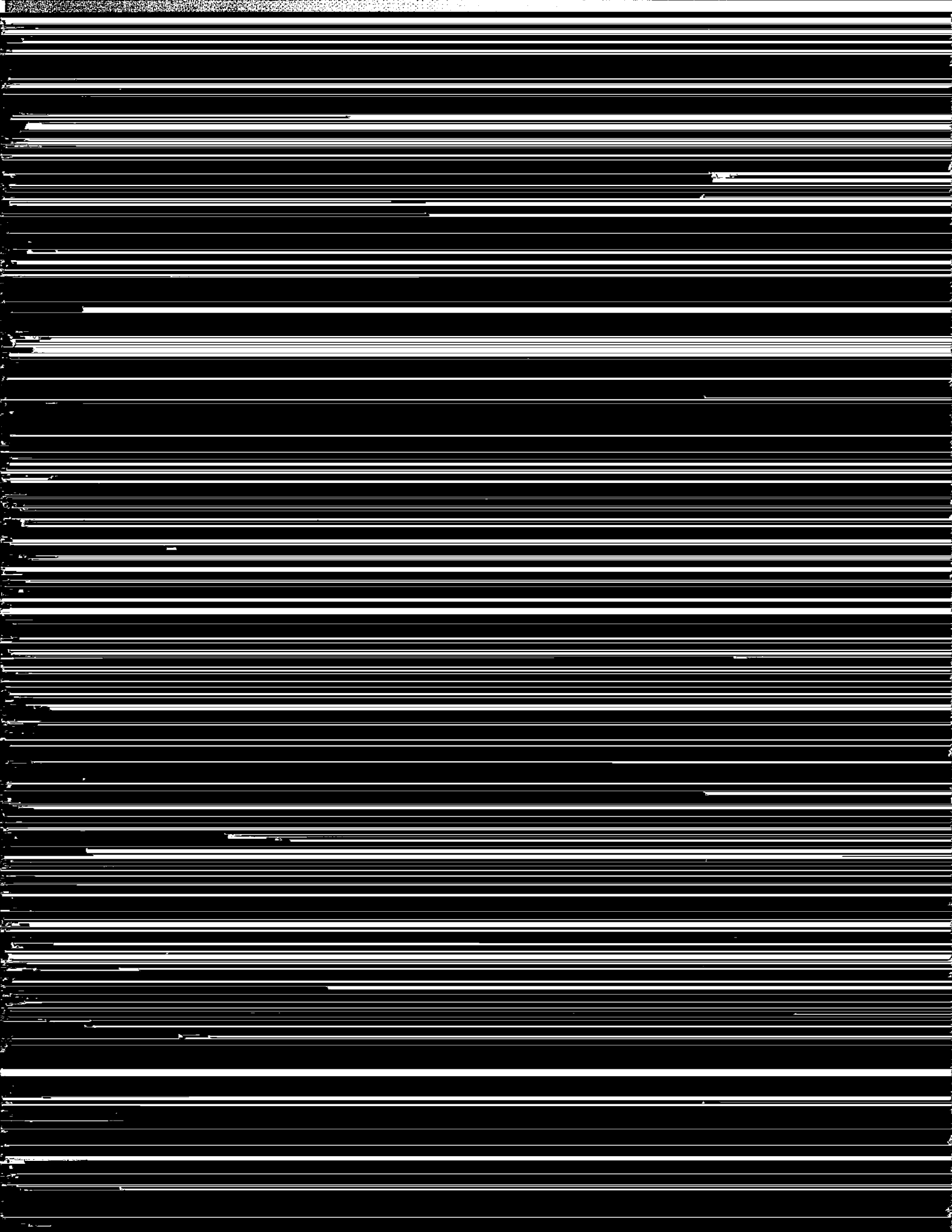


1



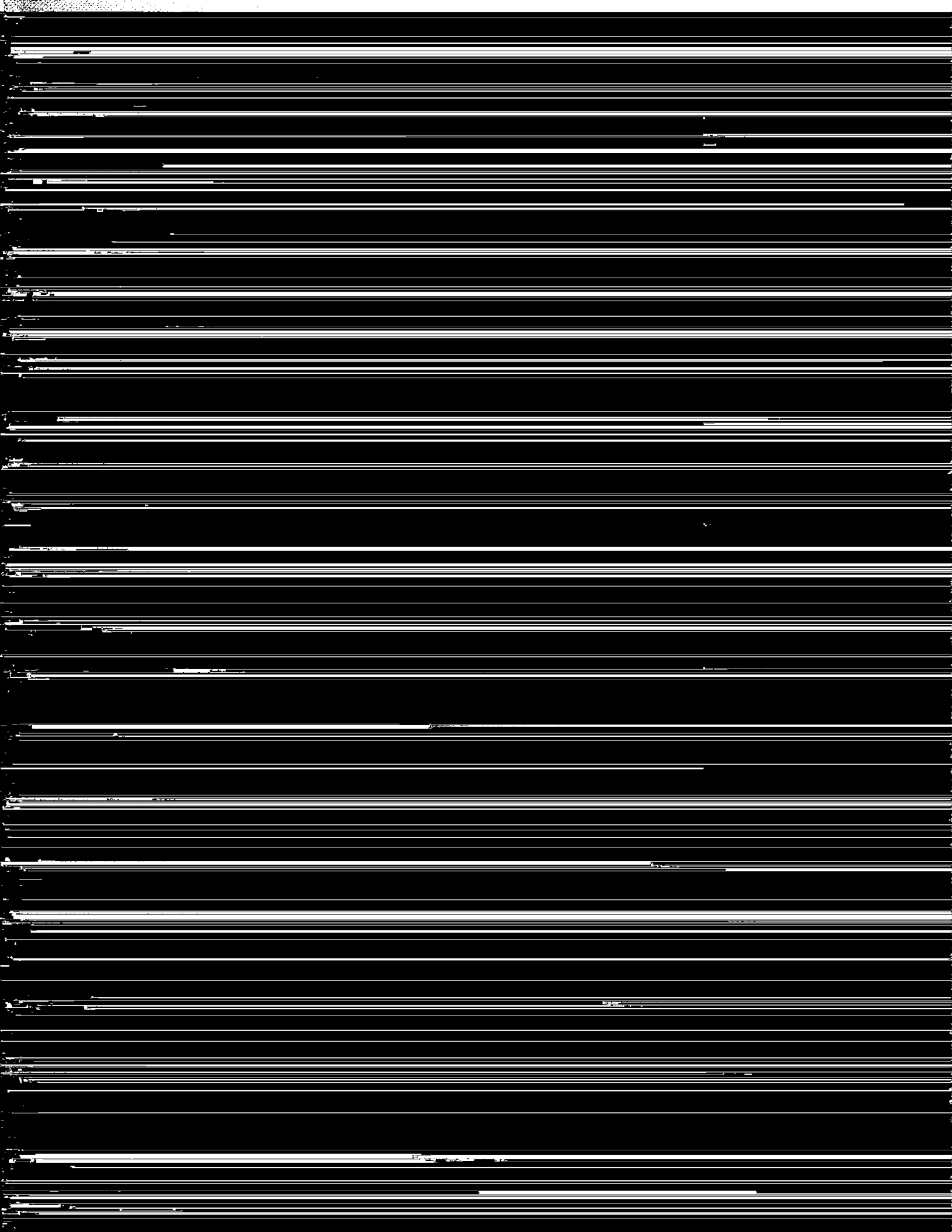
This study is exploratory in nature, so that respondents were asked about their definitions of domestic violence and abuse. Thus, the interviewer did not impose definitions on



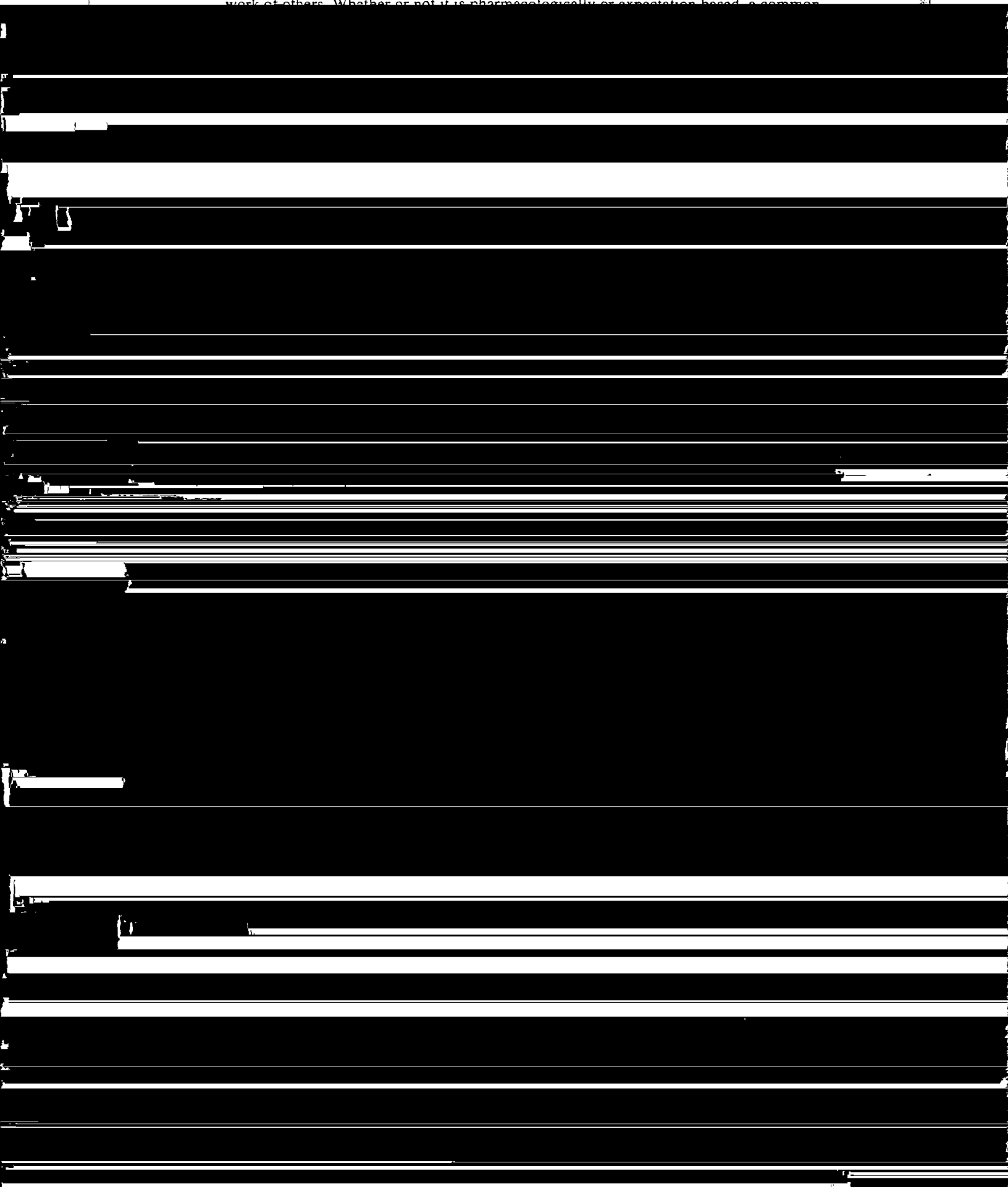
Just to . . . Well, before I moved down here I was heavy into drugs and that was one of the reasons I moved down . . . to get away from it all. And then I met him and one thing led to another and I got in with some people that were party animals and doing drugs, and that sort of thing, but . . . Yeah, to escape, to like tune him out, I'd just get blown away at night.

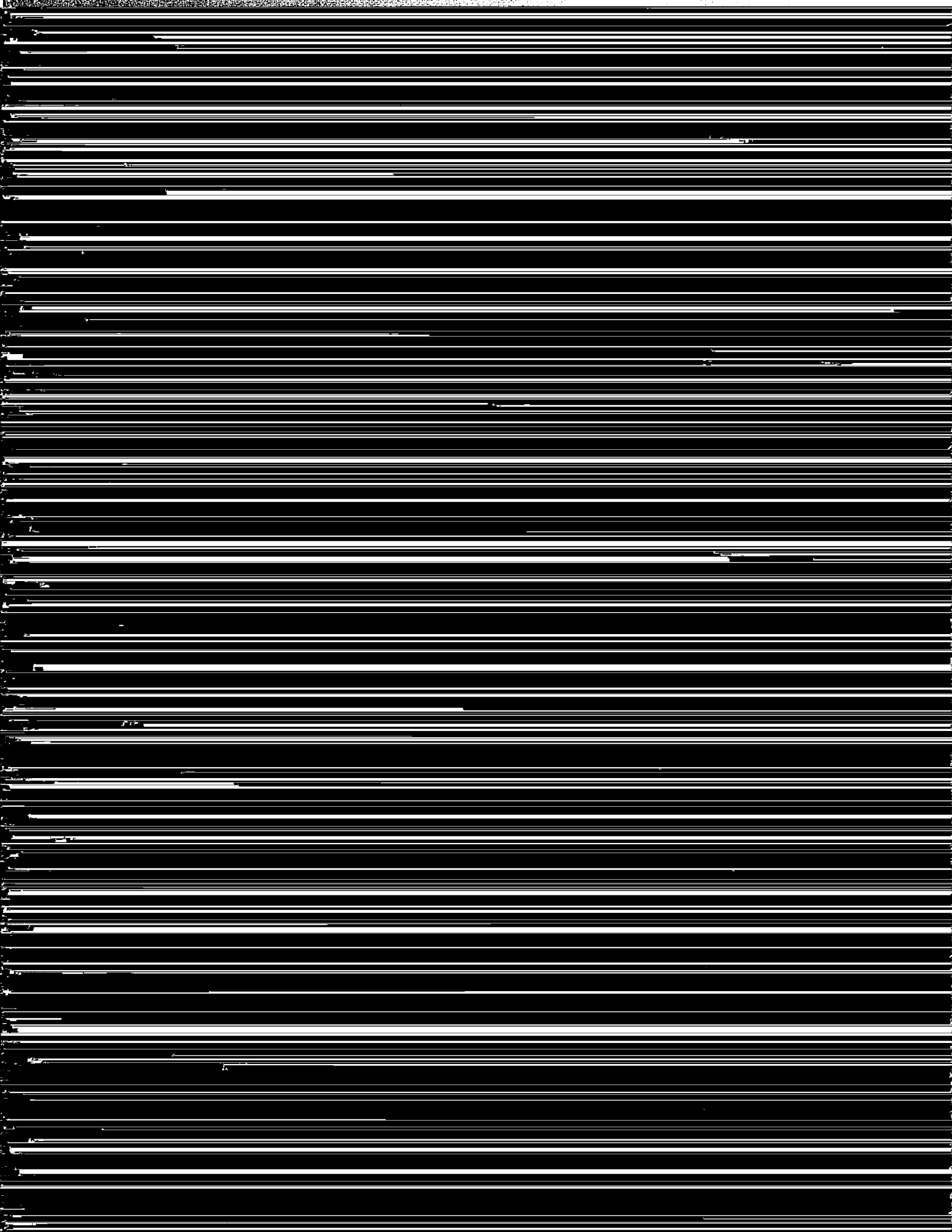
He said to me with the questions: "Were these ever reversed? Did you ever drink





work of others. Whether or not it is pharmacologically or expectation based, a common





- Robbins, C. A., & Martin, S. S. (1993). Gender, styles of drinking, and drinking problems. *Journal of Health and Social Behavior, 34*, 302-321.
- Schilit, R., Lie, G., & Montagne, M. (1990). Substance use as a correlate of violence in intimate lesbian relationships. *Journal of Homosexuality, 19*, 51-65.
- Van Hasselt, V. B., Morrison, R. L., & Bellack, A. S. (1985). Alcohol use in wife abusers. *Journal of Abnormal Psychology, 94*, 127-135.